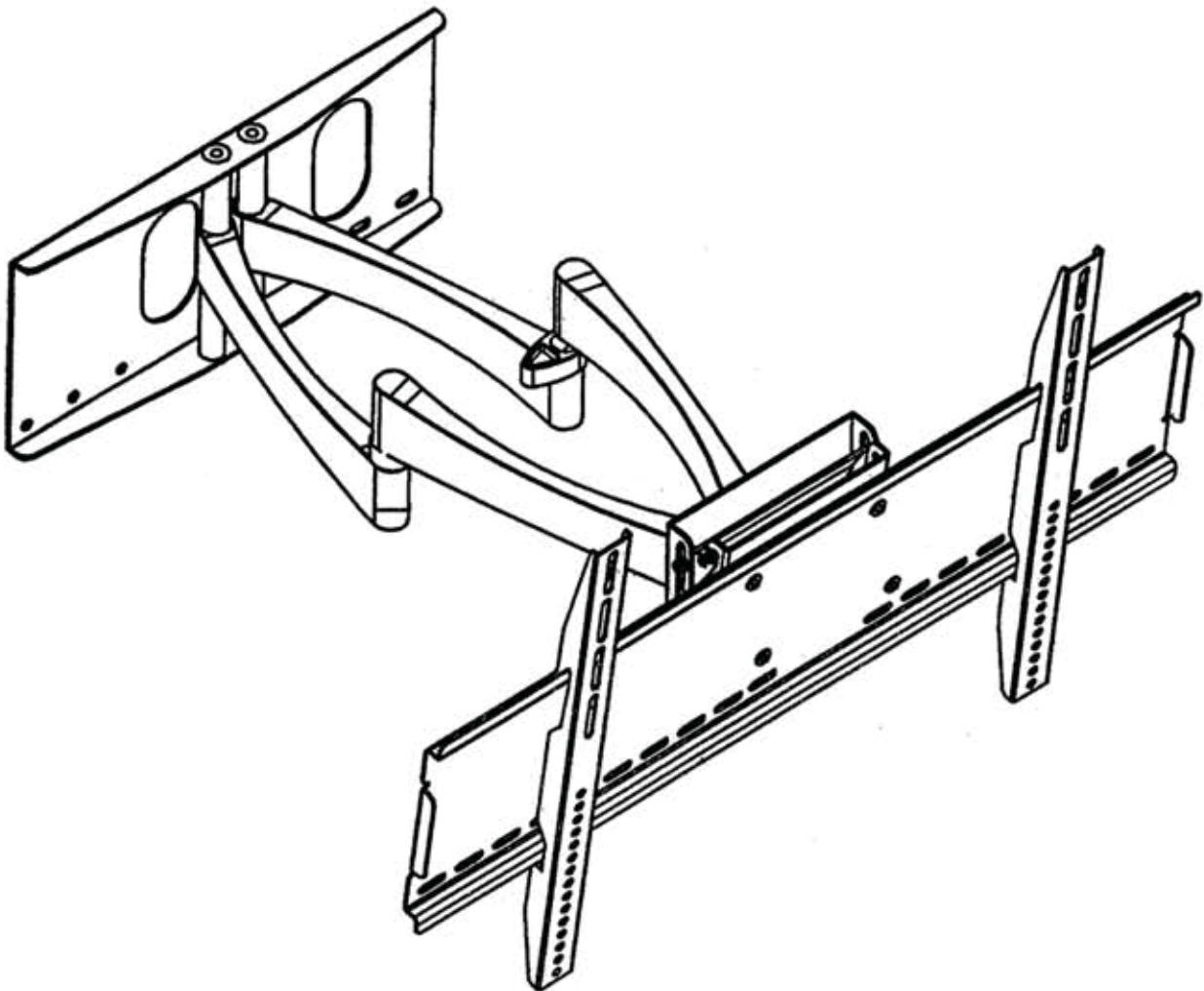
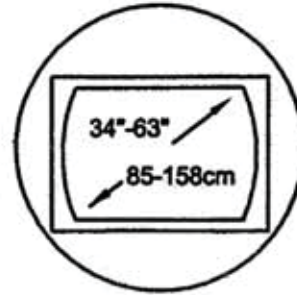
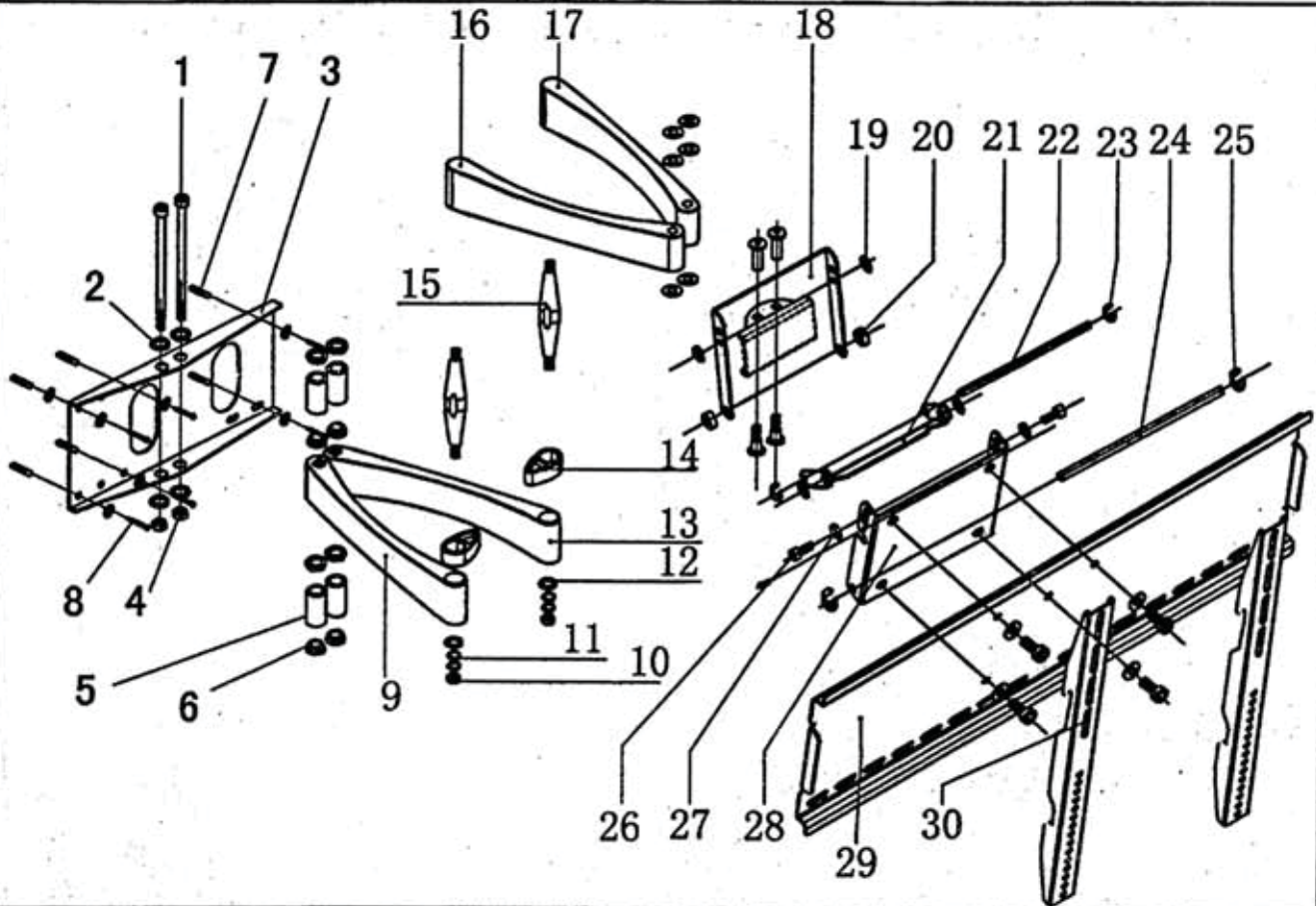


PLASMA/LCD MOUNT



EXPLODE DRAWING

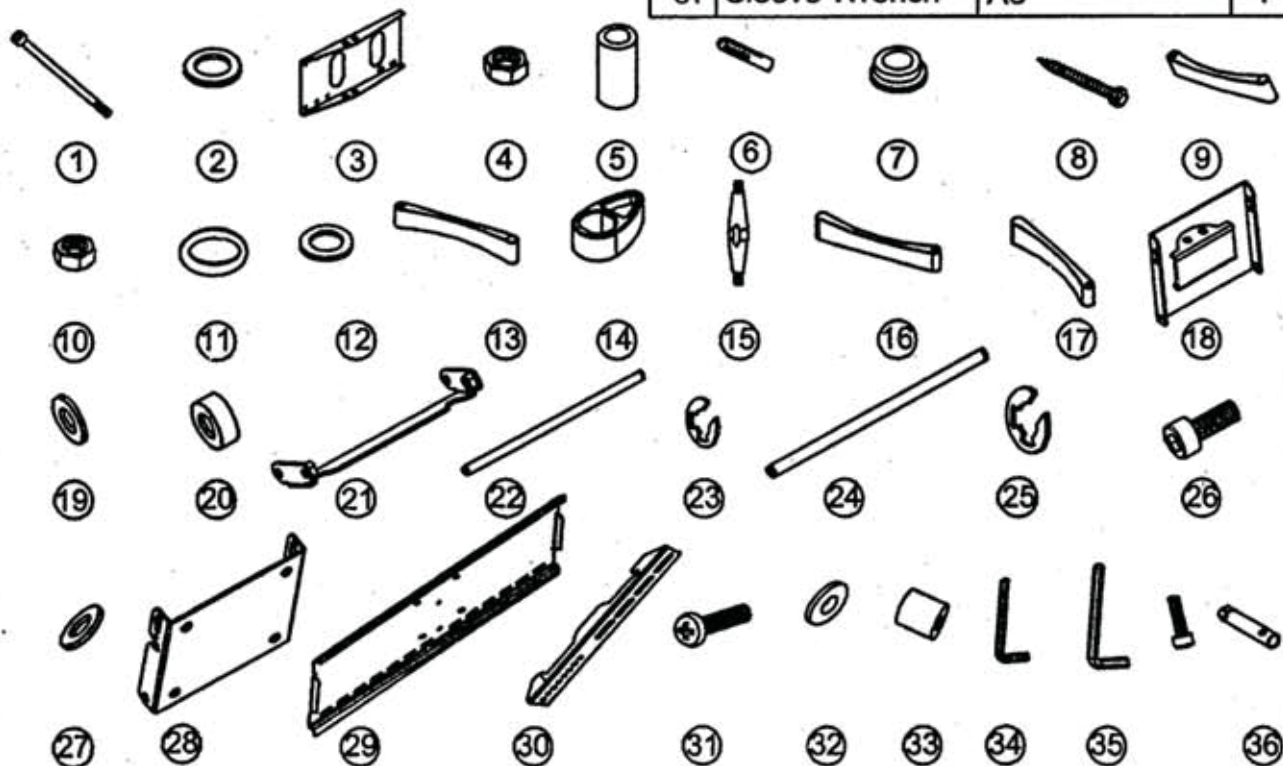


⚠ WARNING:

- 1、 The wall installed plasma bracket must be firmness and tightness, such as concrete wall, solid brick wall and solid wood wall. Do not install on hollow and floppy walls for fear security accidents.
- 2、 Tighten screw so that wall plate is firmly attached, but do not overtighten. Overtightening can damage the screws, greatly reducing their holding power
- 3、 Do not remove screw or loosen screw until it is no longer engaged with the mount. Doing so many cause the screen to fall.
- 4、 For security option, tighten all the screws with security allen wrench.

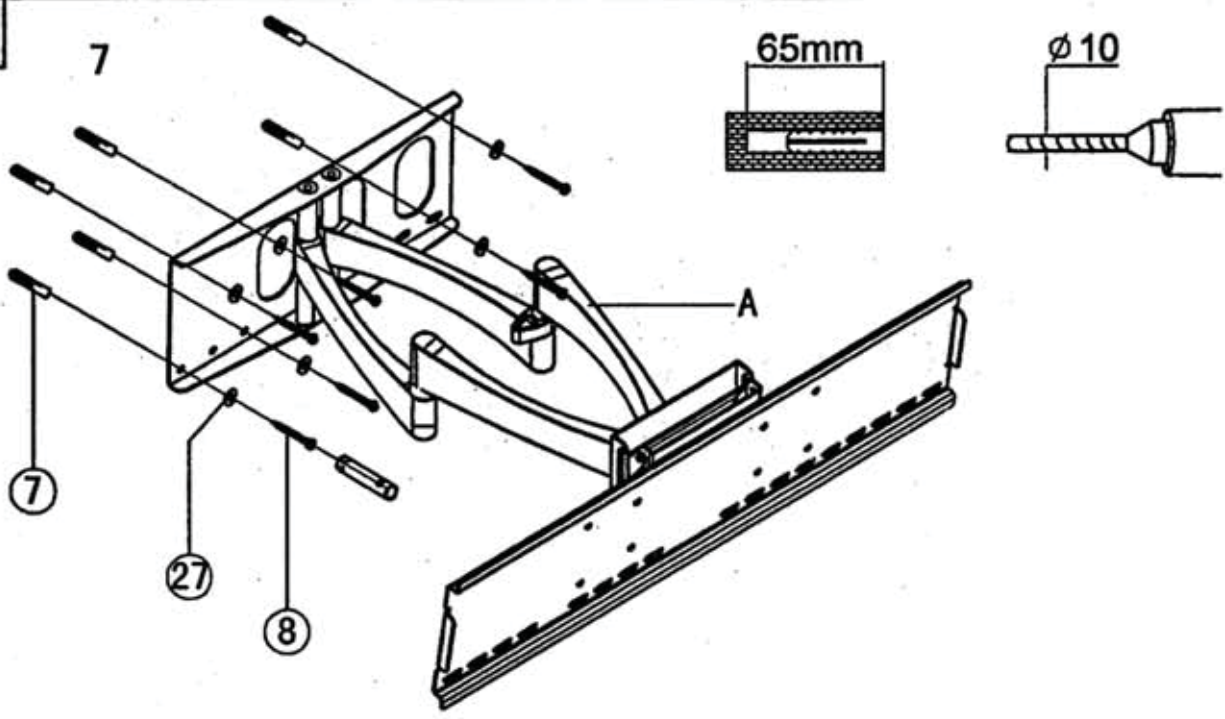
SPARE PART LIST

NO.	Part Name	Part Material	Qty	NO.	Part Name	Part Material	Qty
1	Bolt	A3	2	20	Axes cover	PA6	2
2	Washer	A3	10	21	Plate girder	SPCC	1
3	Wall Plate	SPCC	1	22	Axes-A	∅8	1
4	Bolt	A3, M12	2	23	Clip spring	65Mn, ∅6	2
5	Pad2	A3	4	24	Axes-B	∅8	1
6	Pad1	A3	8	25	Clip spring	65Mn, ∅8	2
7	Concrete anchor	PA6	6	26	Bolt	A3 M8x20	6
8	Flat wood screw	ST7x65	6	27	Flat pad	A3	12
9	Twin	Alu	1	28	Fix plate-B	SPCC	1
10	Nut	A3* M10	2	29	Plate	SPCC	1
11	Arc pad	65Mn	4	30	Arm	SPCC	2
12	Flat pad	A3	2	31	Screw	M4/M5/M6x30	4
13	Twin arm	Alu	1			M8x25/40	
14	Axes cover	ABS	2	32	Flat pad	A3, ∅5/ ∅6/ ∅8	4
15	Taper axes	A3	2	33	Plastic pad-1	PA6 ∅12x∅6x13	4
16	Twin arm	Alu	1		Plastic pad-2	PA6 ∅18x∅9x20	4
17	Twin arm	Alu	1	34	Allen wrench	45#	1
18	Fix plate-A	SPCC	1	35	Allen wrench	45#	1
19	Flat pad	PA6	4	36	Bolt	A3 M6x20	4
				37	Sleeve Wrench	A3	1



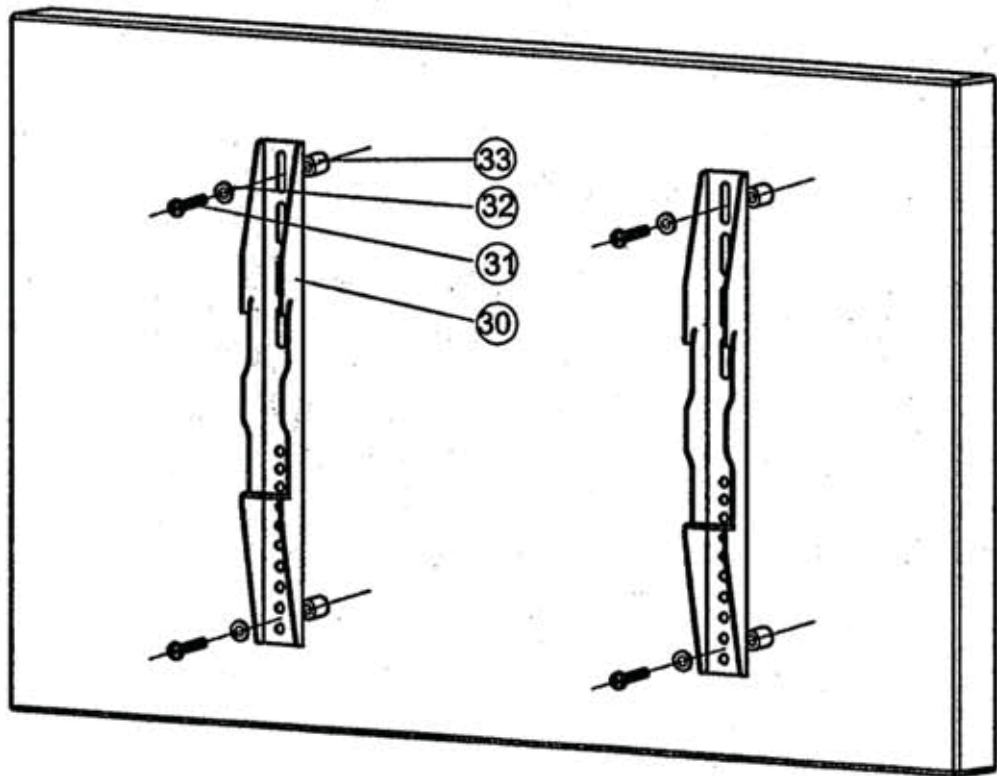
INSTALLATION SPECIFICATION:

1



- 1: Drill diameter 10mm holes on the wall as the picture shows
- 2: Fix the "A" parts on the wall with the components (7), (27), (8).

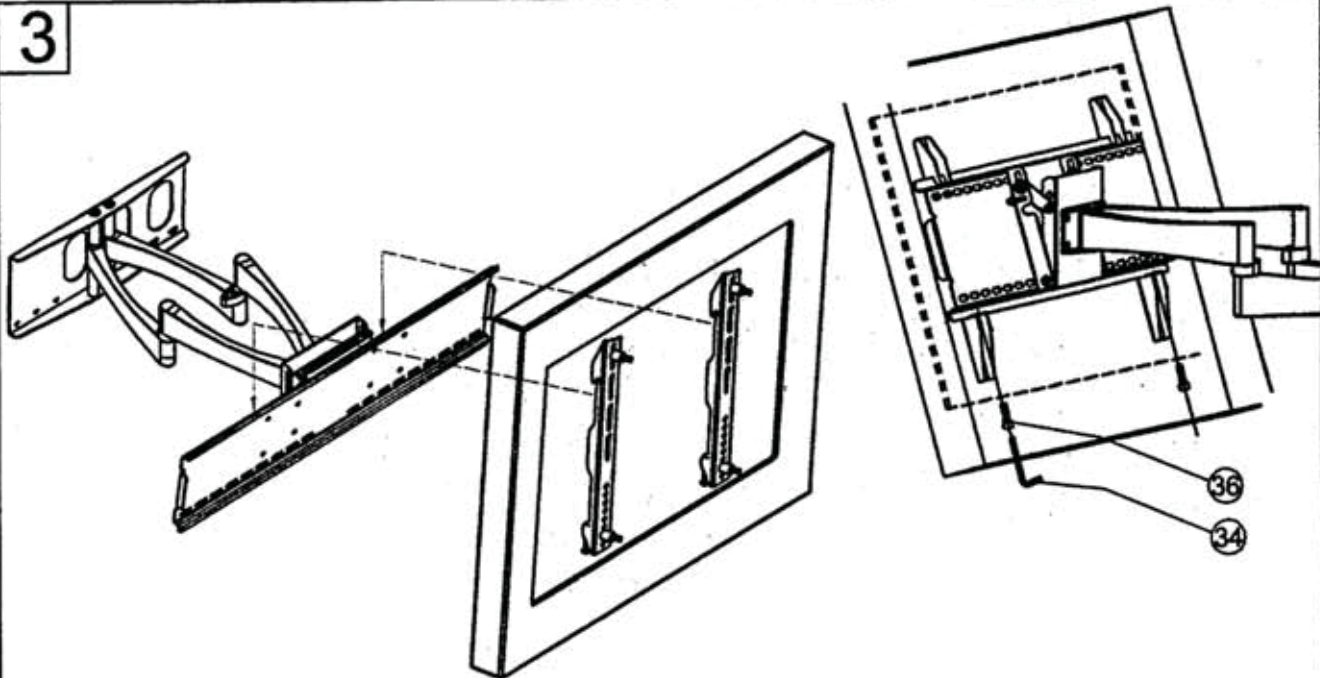
2



1. Use bolt (31), flat plate (32) and plastic plate (33) to fix plasma monitor on the monitor bracket (30).

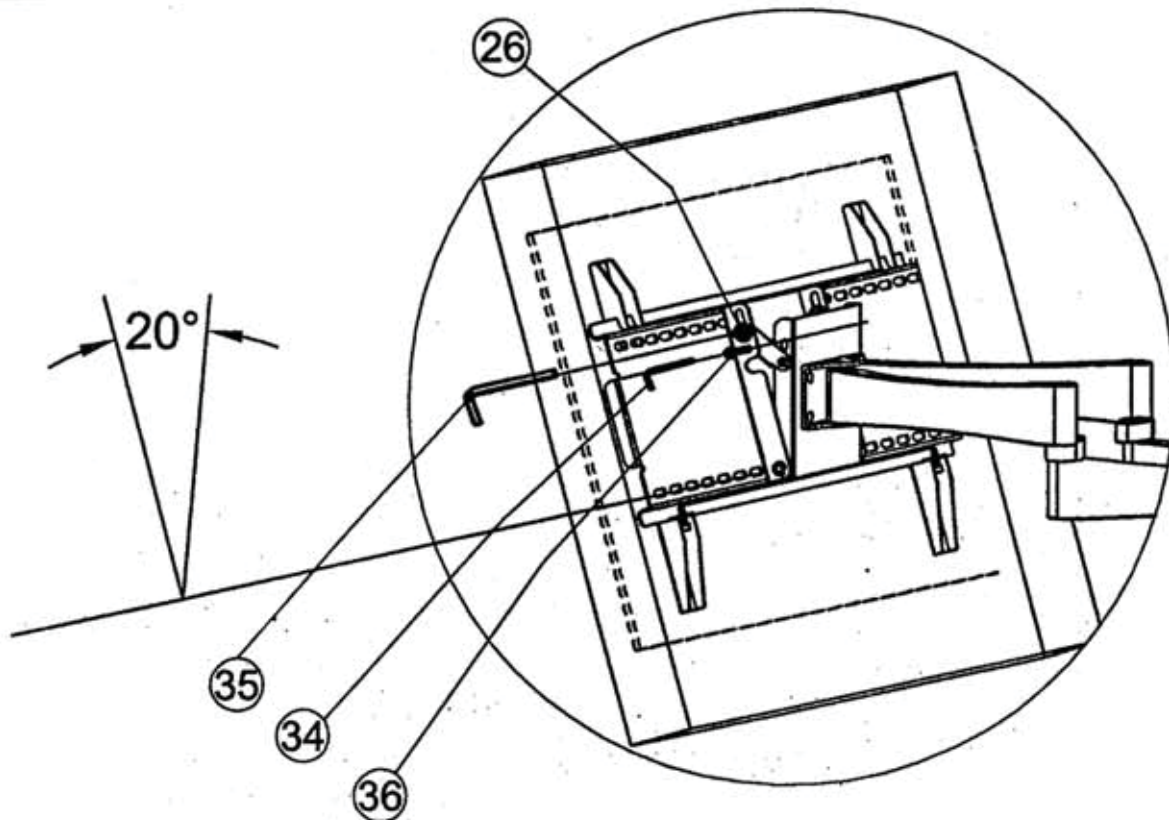
INSTALLATION SPECIFICATION:

3



1. Hang up the well-assembling plasma monitor on the wall plate (Draw 1) in the place required.

2. Using up 40# allen wrench ③④ to spin bolt ③⑥ and screw down.



1. Loosing the bolt ③⑥ with allen wrench ③④ for adjustable LCD angle, if perfect, tighten with bolt ②⑥ .